



## Lag Screw Expansion Shields

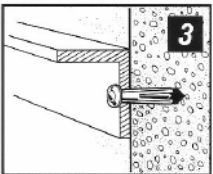
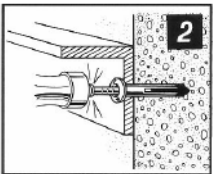
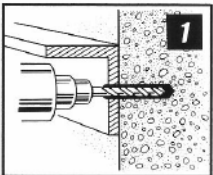
Use these precision die-cast shields to anchor in all types of masonry. They're ideal between bricks in mortar joints, in cinder block, or for attaching steel to concrete.



Lag Screws  
Available  
See page 37

Part #	Lag Size	Drill Size & Length	Box Quantity
5/16S	5/16"	1/2" x 1-1/4" (Shorts)	50
5/16L	5/16"	1/2" x 1-3/4" (Longs)	50
3/8S	3/8"	5/8" x 1-3/4" (Shorts)	50
3/8L	3/8"	5/8" x 2-1/2" (Longs)	50

### Installation Steps



#### Nail Drive Anchor:

- \* Can be used in concrete, block and brick.
- \* Easy through-the-work installations.
- \* Low-profile, one piece anchor assembly.
- \* Suitable for use in high compressive strength concrete. (Where codes do not permit powder-actuated fastening.)

#### Applications

- \* Brackets and frames
- \* Skirting and flashings
- \* Drywall track
- \* Barrier plates

## Nail-Drive Anchors



Part #	Drill Size & Length	Box Quantity
HS-1410	1/4" x 1"	100
HS-1412	1/4" x 1-1/4"	100
HS-1414	1/4" x 1-1/2"	100
HS-1420	1/4" x 2"	100

## Tubular Wall Anchors Fits 1/4" or 5/16" Lag Screws

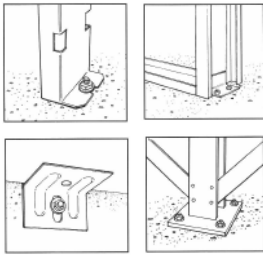
Our most economical anchor for use in drywall, concrete, wood or brick. To install, insert anchor in drilled hole, insert screw through fixture into anchor and tighten.



Lag Screws Sold Separately

Lag Screws  
Available  
See page 37

Part #	Drill Size & Length	Box Quantity
PA2	3/8" x 2"	50



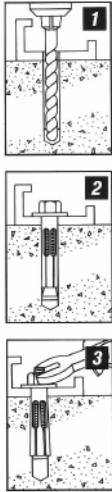
## Red Head Concrete Dynabolt Sleeve Expansion Anchors



For solid concrete and hollow block and brick. L-Brackets to concrete walls and floors. Etc...

- \* Anchor diameter equals hole diameter.
- \* Provides full 360° hole contact over large area and reduces concrete stress.
- \* Heavy-loading capacity.
- \* Pre-assembled for faster, easier installations.
- \* Dynabolt can be installed through object to be fastened.
- \* Six rib sleeve design improves holding power.
- \* No pre-spotting of holes necessary.

### Installation Steps



Part #	Drill Size & Length	Box Qty.	Part #	Drill Size & Length	Box Qty.
HN-1614	5/16" x 1-1/2"	100	HN-5822	5/8" x 2-1/4"	25
HN-1624	5/16" x 2-1/2"	100	HN-5830	5/8" x 3"	25
HN-3817	3/8" x 1-7/8"	50	HN-5842	5/8" x 4-1/4"	10
HN-3830	3/8" x 3"	50	HN-5860	5/8" x 6"	10
HN-1222	1/2" x 2-1/4"	25	HN-3424	3/4" x 2-1/2"	10
HN-1230	1/2" x 3"	25	HN-3440	3/4" x 4"	5
HN-1240	1/2" x 4"	25	HN-3462	3/4" x 6-1/4"	5

**FULLY-THREADED ADVANTAGE**

Trubolt's fully-threaded feature eliminates sub-surface obstruction problems.

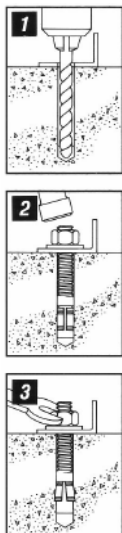
Fully-threaded design accommodates various material thicknesses at the same embedment.

## Red Head Concrete Trubolt Carbon Wedge Expansion Anchors



- \* Versatile fully threaded design is standard on sizes up to 3/4" diameter and 7" length.
- \* 360° contact with concrete assures full expansion for reliable working loads.
- \* Can be installed through the work fixture, eliminating hole spotting.
- \* Non bottom-bearing, may be used in hole depth exceeding anchor length.
- \* Heavy duty pull-out and shear capacities.

### Installation Steps



Part #	Drill Size & Length	Box Qty.	Part #	Drill Size & Length	Box Qty.
WS-3822	3/8" x 2-1/4"	50	WS-5860	5/8" x 6"	10
WS-3826	3/8" x 2-3/4"	50	WS-5870	5/8" x 7"	10
WS-3830	3/8" x 3"	50	WS-5884	5/8" x 8-1/2"	10
WS-3836	3/8" x 3-3/4"	50	WS-58100	5/8" x 10"	10
WS-3850	3/8" x 5"	50	WS-3442	3/4" x 4-1/4"	10
WS-1226	1/2" x 2-3/4"	25	WS-3446	3/4" x 4-3/4"	10
WS-1236	1/2" x 3-3/4"	25	WS-3454	3/4" x 5-1/2"	10
WS-1242	1/2" x 4-1/4"	25	WS-3462	3/4" x 6-1/4"	10
WS-1254	1/2" x 5-1/2"	25	WS-3470	3/4" x 7"	10
WS-1270	1/2" x 7"	25	WS-3484	3/4" x 8-1/2"	10
WS-5834	5/8" x 3-1/2"	10	WS-34100	3/4" x 10"	10
WS-5842	5/8" x 4-1/4"	10	WS-34120	3/4" x 12"	10
WS-5850	5/8" x 5"	10			